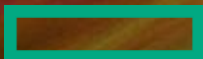


# KOMONDOR PLATFORM ARCHITEKTÚRA A K+F TÁMOGATÁSÁBAN

Ódor Tamás – HPC & Storage presales

**Hewlett Packard Enterprise**

2022.11.29





# KOMONDOR VÉRVONAL - HPE PRE-EXASCALE ÉS EXASCALE RENDSZEREK



## NERSC Perlmutter

- ~\$146M system contract
- More than 100 PF Peak performance
- Future AMD CPU and NVIDIA architecture and Slingshot interconnect
- Mixed AI and HPC workload
- > 4 TB/s, 30 PB ClusterStor E1000 AllFlash



## ANL "Aurora"

- ~\$100M system subcontract
- More than 1 EF Peak performance
- Future Intel Xeon CPU and Intel X<sup>e</sup> architecture and Slingshot interconnect
- Mixed AI and HPC workload
- > 1 TB/s, 200 PB ClusterStor E1000



## ORNL "Frontier"

- ~\$600M system contract
- More than 1.5 EF Peak performance
- Future AMD EPYC CPU and Radeon GPU and Slingshot interconnect
- Mixed AI and HPC workload
- > 10TB/s, > 700 PB ClusterStor E1000
- **#1 on TOP500**



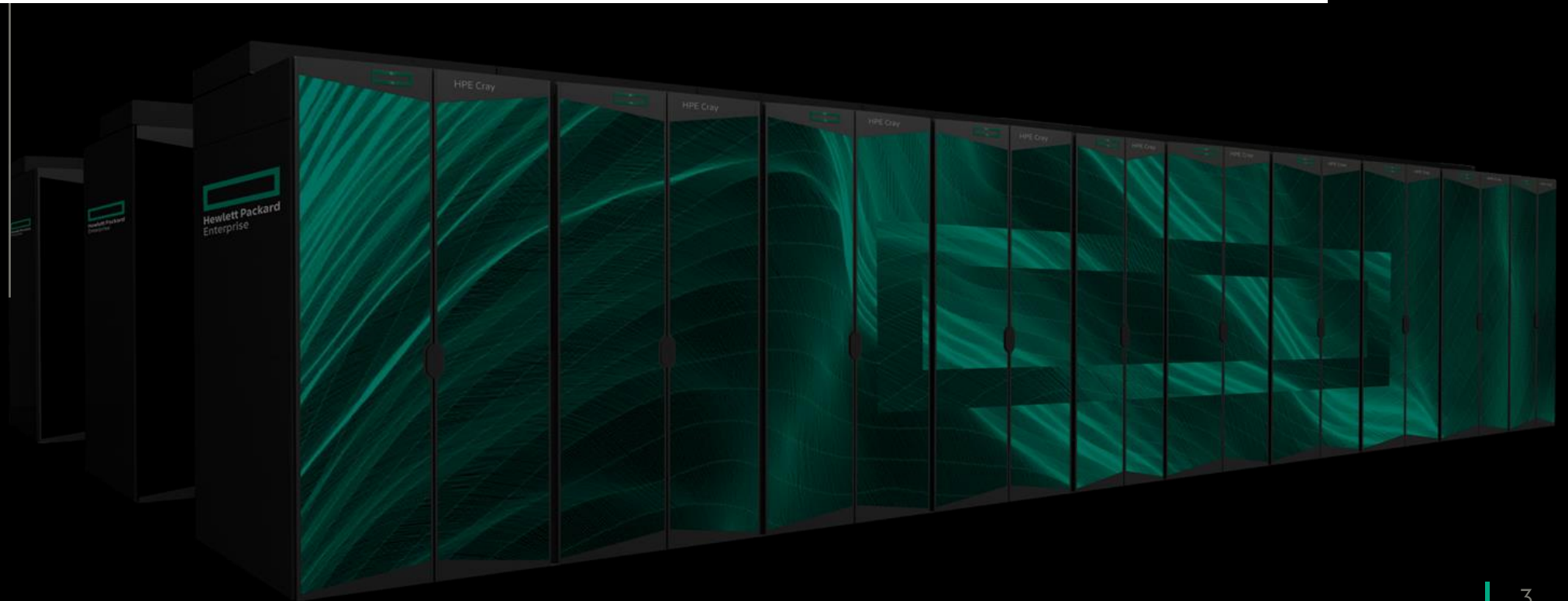
## LLNL "El Capitan"

- ~\$600M system contract
- More than 2.0 EF Peak performance
- Future AMD EPYC CPU and Radeon GPU and Slingshot interconnect
- Mixed AI and HPC workload
- > 2.5 TB/s, ~450 PB ClusterStor E1000

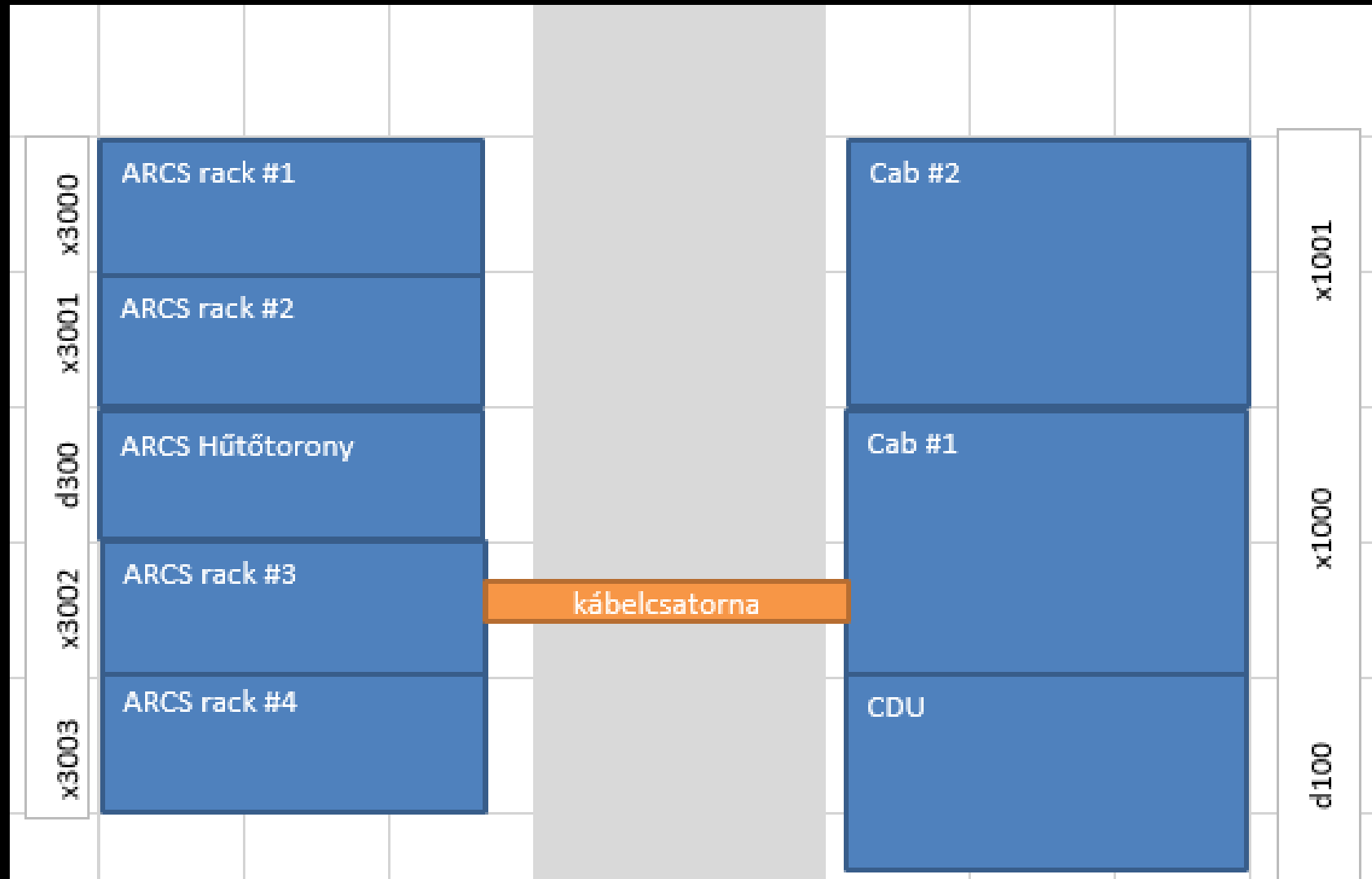


# KOMONDOR AZ ÉLVONALBAN

List	Rank	System	Vendor	Total Cores	Rmax (PFlop/s)	Rpeak (PFlop/s)
11/2022	199	HPE Cray EX, AMD EPYC 7763 64C 2.45GHz, NVIDIA A100 SXM4 40 GB, Slingshot-11	HPE	28,768	3.09	4.67

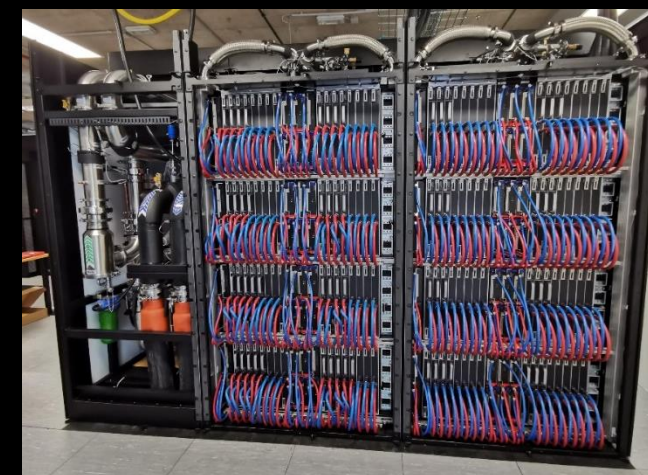
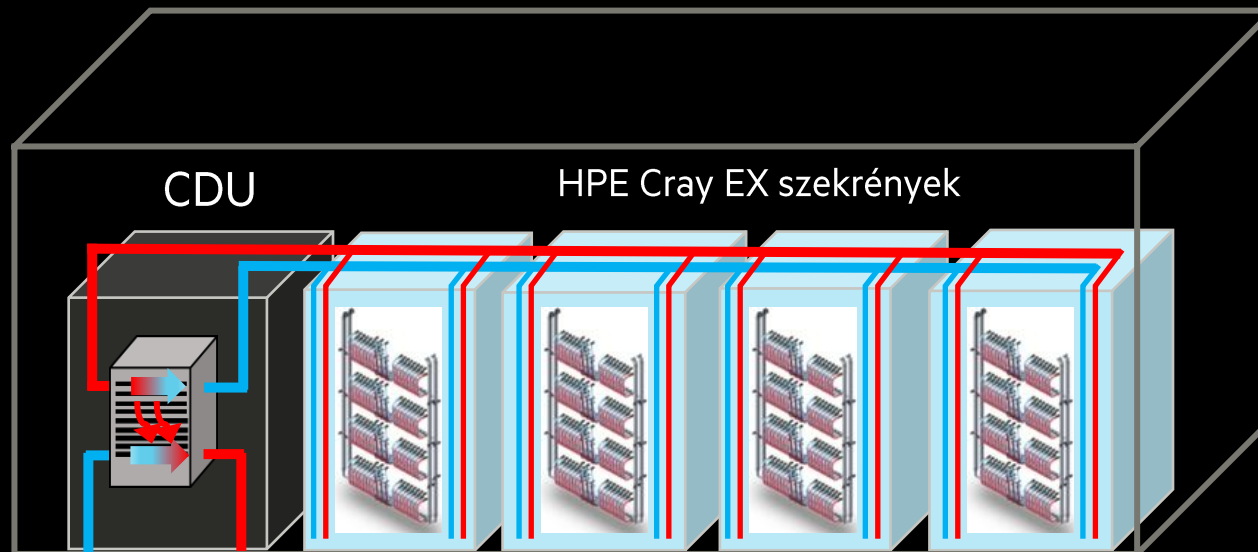


# KOMONDOR ALAPRAJZ

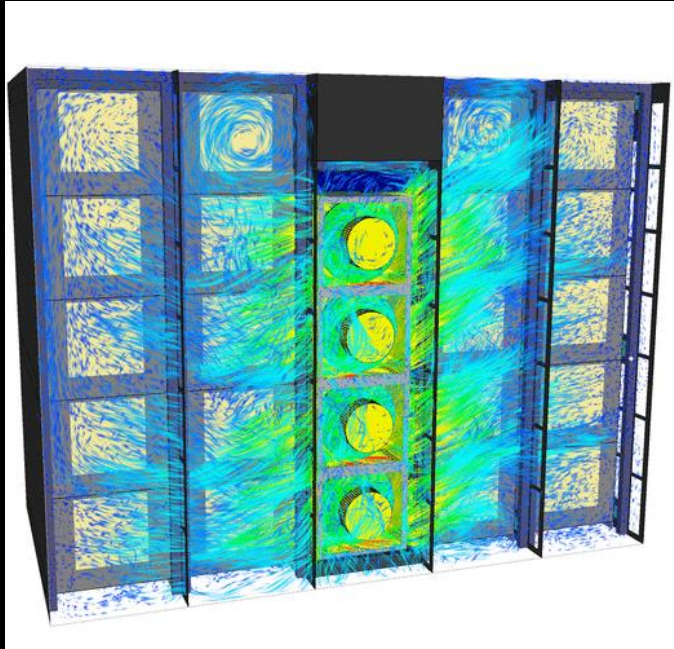




# KOMONDOR - HPE CRAY EX4000 SZUPERSZÁMÍTÓGÉP



# HPE ARCS – KOMONDOR MI, DACP, TÁRTERÜLET, HÁLÓZAT, ADMIN





**komondor**

Köszönöm a figyelmet!

[tamas.odor@hpc.hu](mailto:tamas.odor@hpc.hu)



**KIFÜ**



**HPC@hu**